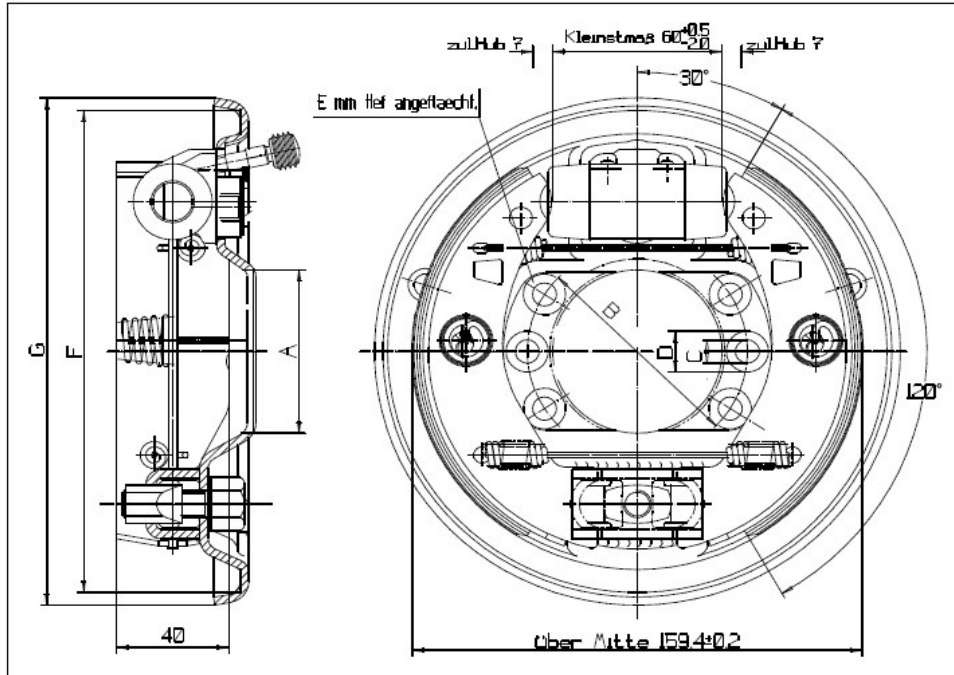


Hydro-Simplex 160x40

144 West Drive • Lodi, Ohio 44254-1062

Tel 330-948-0144 Fax 330-948-9222



data of the hydro drum brake

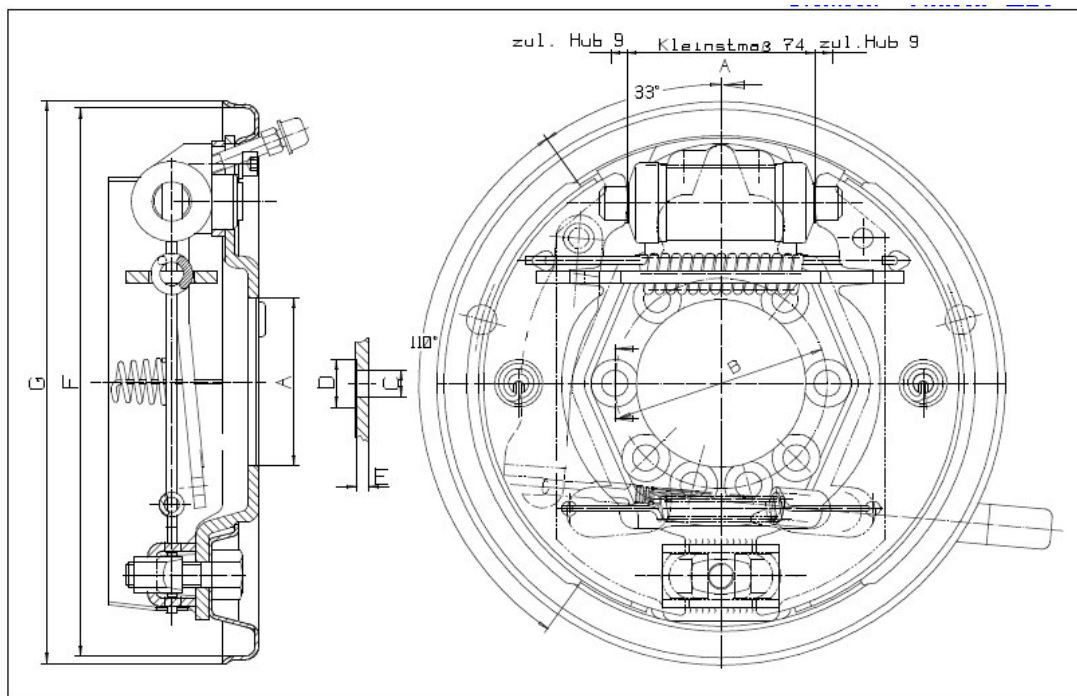
perm. Pressure range:
brake fluid:

120 bar
(B) brake fluid DOT3 u. 4 or SAE J1703
(M) mineral oil DIN 51524 and HD-Öl or STOU-Öl

Special types
on request

Drawing no.	lining-quality	parking brake lever	wear indicator	adjuster	wheel cylinder size	brake fluid	pressure connection	A	B	C	number of holes	D	E	F	G	max. brake torque (Nm)	brake cable
100333	Beral 1541	no	no	autom.	22,2	B	M10x1	68	84	8,5	6	22			158	550	no
100403	Beral 1109	no	no	man.	14,29	M	M10x1	62	80	9	6				158	280	no
24810	Energit 554	yes	no	man.	19,05	B	M10x1	51	78	8,5	6			177	181	3900	no
24811	Energit 554	no	no	man.	19,05	B	M10x1	51	78	M8	6			177	181	3900	no
24812	Energit 554	no	no	man.	19,05	B	M10x1	51	78	8,5	6			177		3900	no
24813	Energit 554	yes	no	man.	14,29	B	M10x1	51	78	8,5	6	15		177		325	no
24814	Energit 554	no	no	man.	17,46	B	M10x1	51	78	8,5	6			177		500	no
24815	Energit 554	no	no	man.	19,05	B	M10x1	51	78	8,5	6			177	181	3900	no
25083	Energit 567	yes	no	man.	12,7	B	M10x1	51	78	8,5	6			177		250	no
25426	Energit 554	yes	no	man.	17,46	B	M10x1	51	78	8,5	6	15		177		500	yes
25428	Energit 554	yes	no	man.	17,46	B	M10x1	51	78	8,5	6	15		177		500	yes
25442	Energit 554	yes	no	man.	17,46	B	M10x1	51	78	8,5	6	15		177		500	no
26704	Energit 554	yes	no	man.	19,05	M	M10x1	80			0				158	655	no
25960	Beral 1541	no	no	man.	17,46	B	M10x1	51	78	8,5	6			177		500	no
26971	Energit 567	no	no	man.	17,46	B	M10x1	62	78	8,5	6			177		500	no
26665	Beral 1541	no	no	man.	17,46	B	M10x1	62	78	8,5	6			177		500	no
27164	Energit 554	no	no	man.	19,05	B	M10x1	55	78	8,5	6	15	0,1	177	181	3900	no
28158	Energit 554	no	no	man.	19,05	B	M10x1	60	78	8,5	6	15	0,1	177	186	3900	no

Hydro-Simplex 200x50



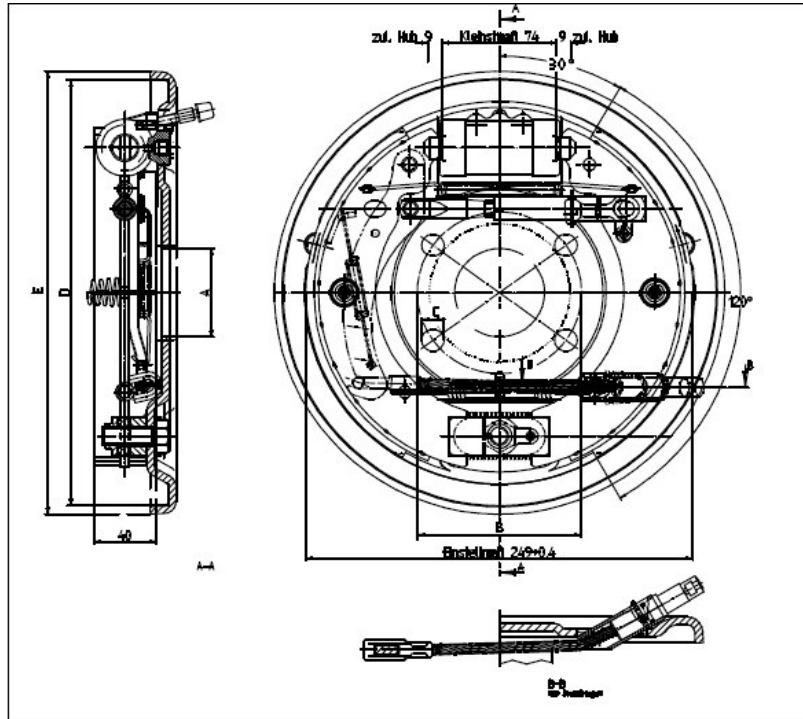
data of the hydro drum brake

perm. Pressure range: 120 bar
 brake fluid: (B) brake fluid DOT3 u. 4 or SAE J1703
 (M) mineral oil DIN 51524 and HD-Öl or STOU-Öl

**Special types
on request**

Drawing no.	lining-quality	parking brake lever	adjuster	wheel cylinder size	brake fluid	pressure connection	A	B	C	number of holes	D	E	F	G	max. brake torque (Nm)	brake cable
25826	Beral 1126	yes	man.	19,05	B	M10x1	44			0			219	255		yes
26079	Beral 1109	yes	man.	22,2	M	M10x1	67	84	10,5	8	19	4	219	225	750	no

Hydro-Simplex 250x40



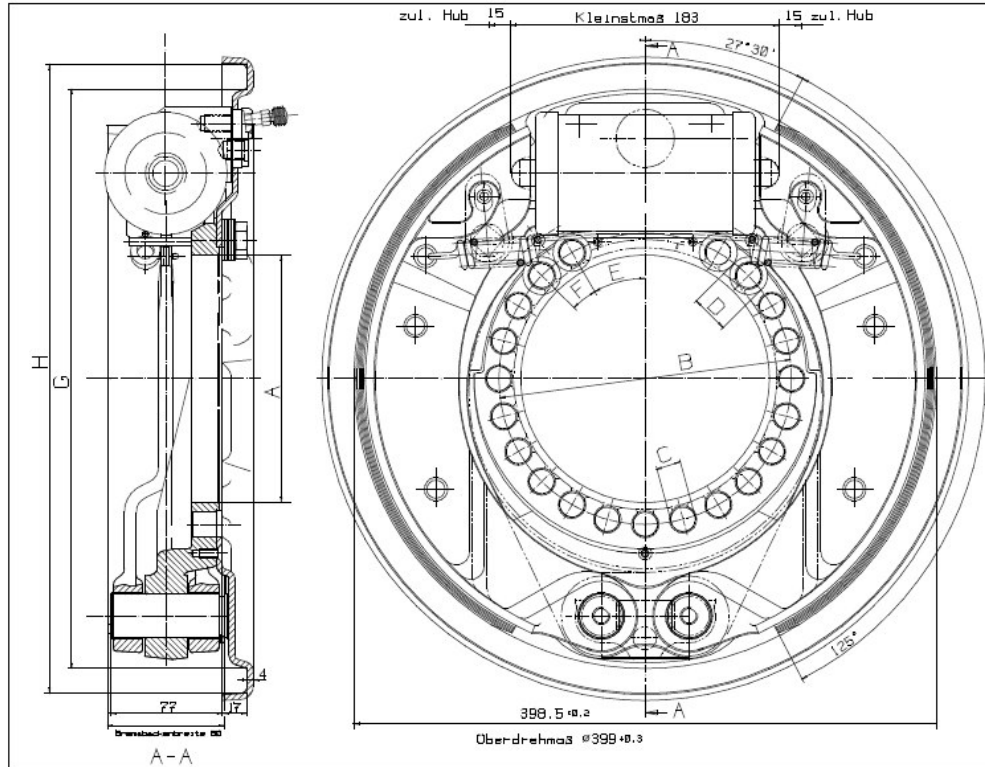
data of the hydro drum brake

perm. Pressure range: 120 bar
 brake fluid: (B) brake fluid DOT3 u. 4 or SAE J1703
 (M) mineral oil DIN 51524 and HD-Öl or STOU-Öl

Special types on request

Drawing no.	lining-quality	parking brake lever	adjuster	wheel cylinder size	brake fluid	pressure connection	A	B	C	number of holes	D	E	max. brake torque (Nm)	brake cable
12646	Cosid 410	yes	man.	25,4	B	M10x1	54				279	290		yes
101990	Cosid 410	no	man.	28,57	B	M10x1	54				279	290		no
12944	Cosid 410	yes	man.	25,4	B	M10x1	52				279	290		yes
13034	Beral 1548	yes	man.	25,4	B	M10x1	60	94	11	6	279			no
13040	Textar T031	yes	man.	28,57	B	M10x1	54				279	290		yes
13136	Cosid 410	yes	man.	25,4	B	M10x1	52				279	290	2000	yes
13298	Cosid 410	yes	man.	28,57	B	M10x1	52				279	290	2000	yes
13485	Cosid 410	yes	man.	15,87	B	M10x1	52				271	290	2000	yes
13599	Cosid 410	yes	man.	22,2	B	M10x1	52				279	290	2000	yes
14384	Cosid 410	no	man.	28,57	M	M10x1	54				279	290		yes
14605	Cosid 410	yes	man.	25,4	B	M10x1	58	106	14,5	4	279	290	2000	yes
24789	Beral 1541	no	man.	28,57	B	M10x1	80	125	13	6	248		2000	no
24790	Beral 1541	no	man.	28,57	B	M10x1	60	94	11	6	248		2000	no
24791	Beral 1541	no	man.	28,57	B	M10x1			13	8	248		2000	no
12594	Energit 567	no	man.	28,57	B	M10x1	80	125	11	10		285	2000	no
12622	Beral 1549	no	man.	28,57	B	M10x1	80	125	11	10			2000	no
12646.01/.02	Beral 1548	yes	man.	25,4	B	M10x1	54				279	290		yes
12646.03/.04	Textar T031	yes	man.	25,4	B	M10x1	54				279	290		yes
12646.05/.06	Cosid 465	yes	man.	25,4	B	M10x1	54				279	290		yes
12646.07/.08	Cosid 410	yes	man.	25,4	B	M10x1	54				279	290		yes

Hydro-Simplex 400x80



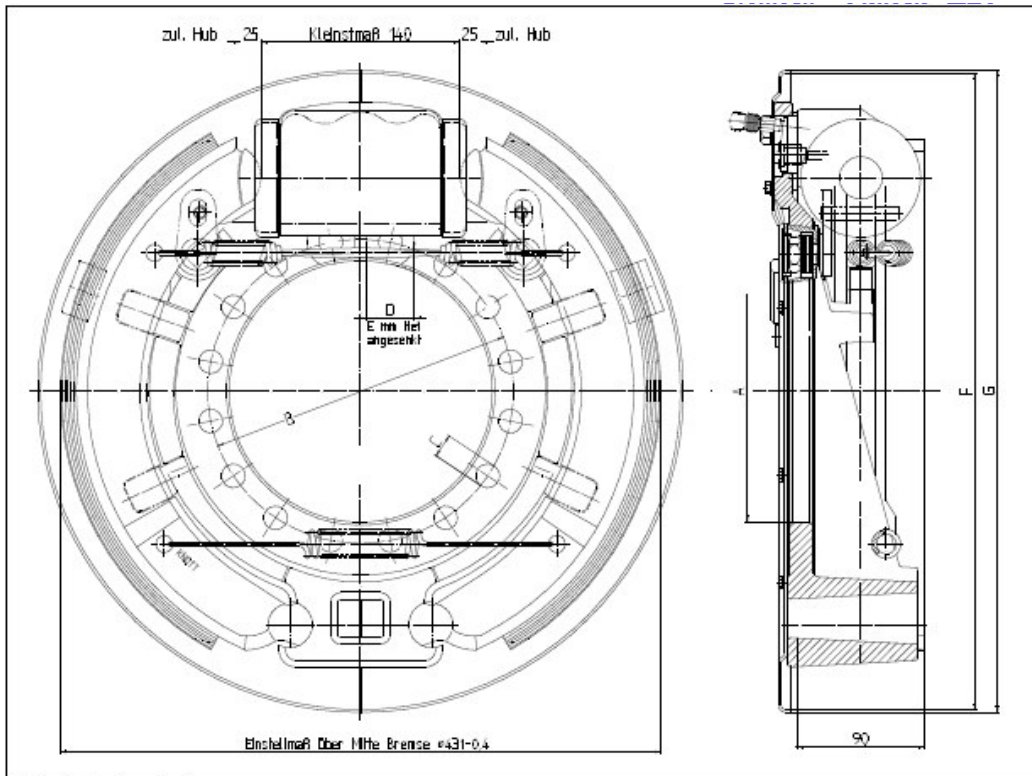
data of the hydro drum brake

perm. Pressure range: 120 bar
 brake fluid: (B) brake fluid DOT3 u. 4 or SAE J1703
 (M) mineral oil DIN 51524 and HD-Oil or STOU-Oil

**Special types
on request**

Drawing no.	lining-quality	parking brake lever	we ar indicator	adjuster	wheel ly linder size	brake fluid	pressure connection	A	B	C	number of holes	D	E	F	G	H	max. brake torque (Nm)	brake cable
101415	Ferodo I/L 401	no	no	autom.	57,15	M	M14x1,5		205	16,50	6	30	68,0	43	398	432	13000	no
12058	Ferodo I/L 401	no	no	autom.	50,8	B	M14x1,5	170	200	16,75	21	26	30,0	15	398	432	16000	no
12059	Ferodo I/L 401	no	no	autom.	65	B	M14x1,5	170	200	16,75	21		30,0	15	398	432	16000	no
12063	Ferodo I/L 401	no	no	autom.	57,15	M	M14x1,5	170	200	16,75	21	26	30,0	15	398	432	13000	no
12066	Ferodo I/L 401	no	no	autom.	57,15	B	M14x1,5	156	200	16,50	13	28	36,0	24	398	432	13000	no
12068	Ferodo I/L 401	no	no	autom.	57,15	B	M14x1,5	170	200	16,75	15		54,0	18	398	432	13000	no
12070	Ferodo I/L 401	no	no	man.	65	M	M14x1,5	170	200	16,75	21	26	30,0	15	398	432	16000	no
12204	Ferodo I/L 401	no	no	autom.	65	B	M14x1,5	170	200	16,75	21	26	30,0	15	398	432	16000	no
12220	Ferodo I/L 401	no	no	autom.	57,15	B	M14x1,5	170	200	16,75	21	26	30,0	15	398	432	13000	no
12854	Ferodo I/L 401	no	no	autom.	57,15	B	M14x1,5	145	180	17,00	10		48°45'	22°30'	398	432	13000	no
12855	Ferodo I/L 401	no	no	autom.	65	B	M14x1,5	145	180	17,00	10		48°45'	22°30'	398	432	16000	no
12856	Ferodo I/L 401	no	no	autom.	57,15	M	M14x1,5	145	180	17,00	10		48°45'	22°30'	398	432	13000	no
12857	Ferodo I/L 401	no	no	autom.	65	M	M14x1,5	145	180	17,00	10		48°45'	22°30'	398	432	16000	no
12952	Ferodo I/L 401	no	no	autom.	65	B	M14x1,5	135	180	14,30	13		45,0	22°30'	398	432	16000	no
13144	Ferodo I/L 401	no	no	autom.	65	M	M14x1,5	170	200	16,75	21	26	30,0	15	398	432	16000	no
101120	Beral 1518	no	no	autom.	65	M	M14x1,5	150	180	16,75	20	28	18,0	18	398	432	16000	no
12015	Ferodo I/L 401	no	no	autom.	65	B	M14x1,5	150	180	16,75	20	28	18,0	18	398	432	16000	no

Hydro-Simplex 432x90



data of the hydro drum brake

perm. Pressure range:

120 bar

brake fluid:

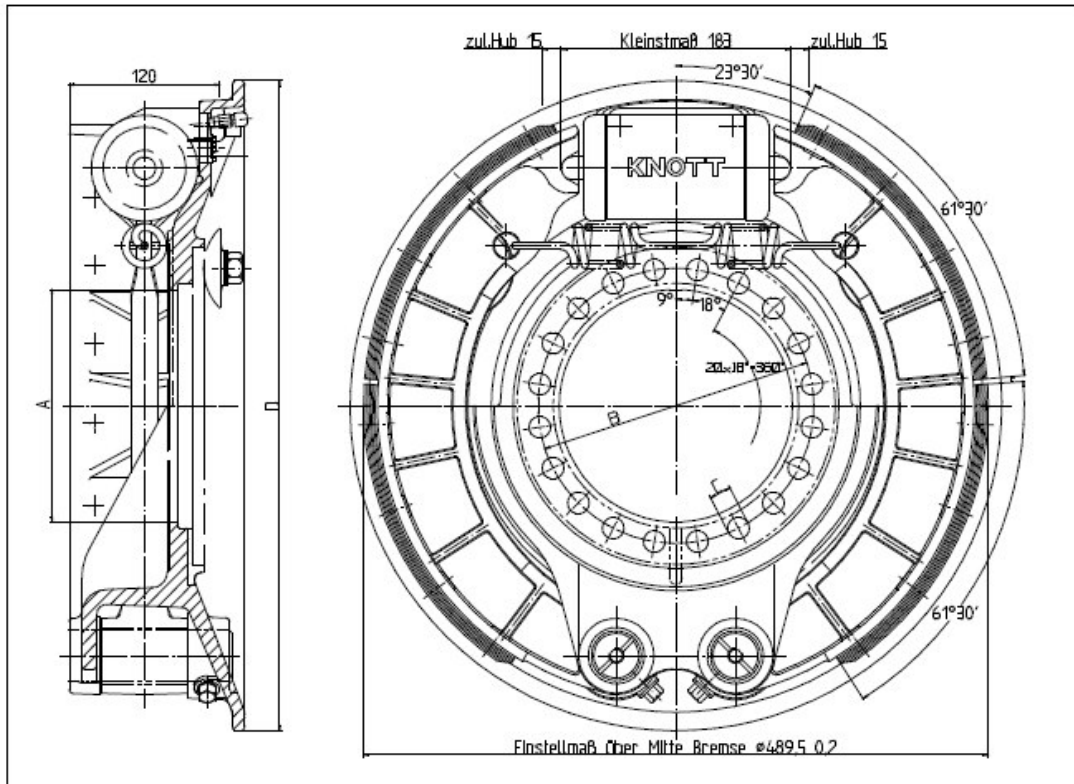
(B) brake fluid DOT3 u. 4 or SAE J1703

(M) mineral oil DIN 51524 and HD-Öl or STOU-Öl

Special types
on request

drawing no.	lining-quality	parking brake lever	wear indicator	adjuster	wheel of liner size	brake fluid	pressure connection	A	B	C	number of holes	D	E	F	G	max. brake torque (Nm)	brake cable
074	Beral 1549	no	no	autom.	65	B	M14x1,5	201,6	225,4	14,5	17	25	7,5	450	454	24000	no

Hydro-Simplex 500x120



data of the hydro drum brake

perm. Pressure range:

120 bar

brake fluid:

(B) brake fluid DOT3 u. 4 or SAE J1703

(M) mineral oil DIN 51524 and HD-Öl or STOU-Öl

Special types
on request

Drawing no.	fining quality	parking brake lever	wear indicator	adjuster	wheel cylinder size	brake fluid	pressure connection	A	B	C	number of holes	D	max. brake torque (Nm)	brake cable
12443	PZ 7026 (Jurid 536)	no	no	autom.	65	B	M14x1,5	166	220	17,3	20	520	20000	no